



Lucara Diamond

Exceptional Stone Tender

Karowe Mine, Botswana Production

Rough Diamond Tender

Viewing Schedule **Gaborone**

November 7 to November 16, 2016

Sale: November 16, 2016 at 4 pm (CET)



Bonas

Diamond Brokers & Consultants



Lucara Diamond

Lucara's Karowe mine is located in central Botswana and has been in production since the middle of 2012. The mine has consistently delivered a stream of exceptional diamonds since mining started in the central and south lobes of the kimberlite, in the first quarter of 2013.

This will be the second "Exceptional Stone Tender" of diamonds recovered from the Karowe mine in 2016 and our tenth to date.

Rough Diamond Tender

Viewing Schedule **Gaborone**

November 7 to November 16, 2016

Sale: November 16, 2016 at 4 pm (CET)

Bids may be submitted at:
www.lucarabids.com
or via secure fax +32 (0) 3 225 1534



Trading – LUC: TSX
LUC: BSE (Botswana)
LUC: OMX (Stockholm)

+32 (0) 3 233 7080
diamondbrokers@bonasgroup.com

<i>Lot Number</i>	<i>Carat Weight</i>
1001	224.47
1002	164.96
1003	83.48
1004	162.45
1005	81.82
1006	63.43
1007	51.60
1008	48.75
1009	92.77
1010	46.30
1011	34.49
1012	44.08



1001

224.47
carats



Dimensions: 38 mm x 28 mm x 17 mm

1002

164.96
carats



Dimensions: 28 mm x 26 mm x 21 mm

1003

83.48
carats



Dimensions: 23 mm x 18 mm x 15 mm

1004

162.45
carats



Dimensions: 27 mm x 24 mm x 18 mm

1005

81.82
carats



Dimensions: 28 mm x 25 mm x 12 mm

1006

63.43
carats



Dimensions: 23 mm x 17 mm x 13 mm

1007

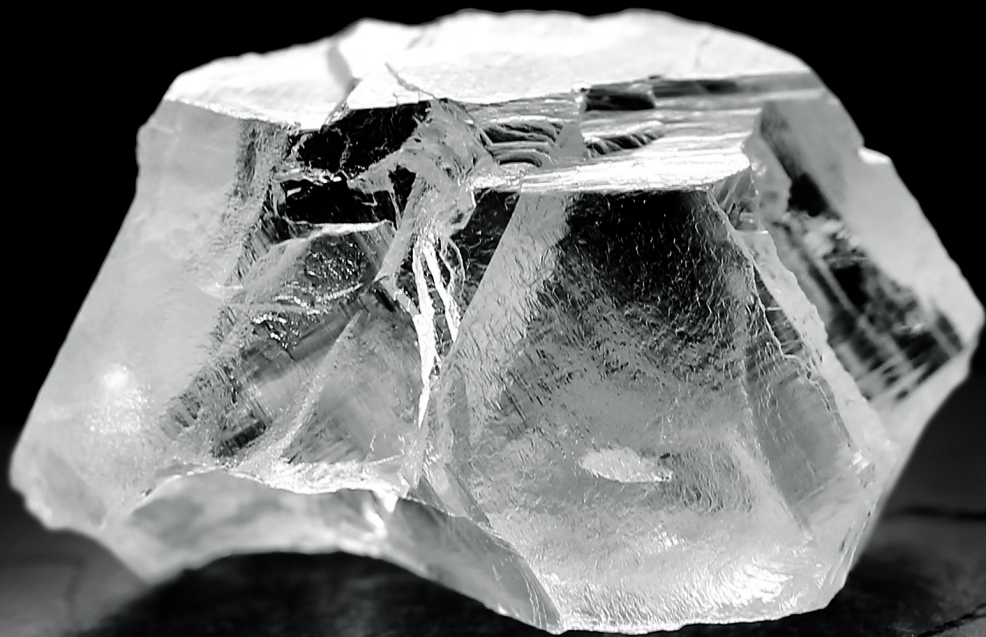
51.6
carats



Dimensions: 25 mm x 18 mm x 10 mm

1008

48.75
carats



Dimensions: 23 mm x 16 mm x 10 mm

1009

92.77
carats



Dimensions: 26 mm x 20 mm x 16 mm

1010

46.30
carats



Dimensions: 23 mm x 16 mm x 11 mm

1011

34.49
carats



Dimensions: 29 mm x 13 mm x 10 mm

1012

44.08
carats



Dimensions: 26 mm x 17 mm x 9 mm



Lucara Diamond

Bids may be submitted at:
www.lucarabids.com
or via secure fax +32 (0) 3 225 1534